

**Rovince**

**PORTFOLIO**




ENGINEERED FOR

**STRENGTH**

BUILT FOR  
PERFORMANCE



**CONTACT US**

WWW.ROVINCETIRE.COM | RANIL@ROVINCETIRE.COM |  +94 77 782 1330

# OUR STORY

Our story began with a simple observation: the industrial world needed a tire tough enough to survive, smart enough to adapt, and reliable enough to reduce downtime to zero. So, in 2014, we began building that tire – right here in Sri Lanka.

Today, Rovince stands as the country's premier manufacturer and exporter of solid tires, delivering products across 20+ countries including the USA, Germany, UAE, Saudi Arabia, Pakistan, and India.

With nearly two decades of expertise, every ROVINCE tire is designed in accordance with U.S. and European (ETRTO/TRA) standards, and manufactured in full compliance with EU REACH regulations—delivering not just performance, but also peace of mind through environmental and safety assurance.

But this isn't just about rubber and rims.

It's about resilience.

It's about engineering trust into every tread.

And it's about ensuring that every mile you drive with Rovince - is a mile of certainty.

## Our Facility

At our state-of-the-art factory in Nattandiya, we blend cutting-edge machinery with local craftsmanship and global standards. From rigorous testing labs to real-world load simulations, every tire is a testament to what happens when precision meets purpose.

## Our Commitment

We're not here to just sell tires. We're here to build relationships, solve problems, and push performance boundaries for the industries that keep the world moving.

**ROVINCE IS NOT JUST A BRAND. IT'S A PROMISE OF PERFORMANCE WITHOUT COMPROMISE.**



# TOUGH TIRES, STRONG NUMBERS

**10+**

Years of Legacy

**20+**

Countries Exported

**2 MILLION +**

Tires Delivered

**99.5%**

On Time Delivery Rate

**100%**

Customer Satisfaction



**OUR**

# **CORE**

## **VALUES**



**Reliability**



**Integrity**



**Innovation**



**Sustainability**



**Customer  
Centricity**



**Performance  
Excellence**

# WHAT MAKES ROVINCE TIRES A CLASS APART



## US American Standards, Global Trust

Born from the blueprint of trusted USA design principles, Rovince Tires embodies the precision and reliability that global industries demand. Our engineering DNA is rooted in American standards, delivering performance that's proven, powerful, and globally recognized.



## Crafted from Sri Lanka's Finest Rubber

Every Rovince tire begins its journey in the lush plantations of Sri Lanka, where the world's finest natural rubber grows. It's not just rubber — it's the heartbeat of durability, resilience, & sustainability that powers our tires from the ground up.



## Built for the Grind 24/7, Zero Downtime

Three shifts, non-stop operations, and not a minute to lose — Rovince Tires are engineered for industrial warriors. Designed to thrive in mission-critical environments, our zero-downtime promise ensures you keep moving, no matter what.



## 4000 Hours of Unmatched Performance

We don't just build tires — we build endurance. With an expected lifetime of over 4000 hours, Rovince delivers premium quality that goes the distance. That means fewer replacements, lower costs, and round-the-clock confidence.



## Your Brand, Our Craftsmanship

Have a vision for your own tire brand? We make it real. With our private label manufacturing program, you get world-class tires with your name on them — so you own the product, the market, and the profits.



## Premium Quality, Competitive Pricing

Who says you have to choose between performance and price? Rovince delivers exceptional value, making it the best-priced premium tire brand proudly made in Sri Lanka. Big performance, smart investment.



# BUILT FOR EVERY INDUSTRY

From bustling warehouses to rugged mining fields, Rovince Tires are trusted by industries that demand strength, reliability, and non-stop performance.



CONSTRUCTION & INFRASTRUCTURE



WAREHOUSING & LOGISTICS



TRANSPORT & MATERIAL HANDLING



PORTS, SHIPPING & CONTAINER YARDS



MINING & QUARRYING



MANUFACTURING & INDUSTRIAL PLANTS



AVIATION & GROUND SUPPORT SERVICES



SCRAP & RECYCLING YARDS

**+ MANY MORE**

Three heavy-duty tires with a deep, aggressive tread pattern are shown. Two are stacked horizontally in the foreground, and one stands vertically behind them. The background is black with a pattern of orange dots that recede into the distance, creating a sense of depth. The text 'GLIDE OR GRIP' is overlaid in large white letters.

# GLIDE OR GRIP

**Performance Starts with  
the Right Tire Selection**





**Rovince**



# SOLID RESILIENT TIRES

Our Resilient Solid tires are designed for heavy-duty industrial environments, offering durability, comfort, and optimal traction.



## GRIP THAT COMMANDS

Open, deep-tread designs dig in and hold firm—no slipping, just superior traction.



## COMFORT COMPOUND

The soft inner layer adapts under pressure—reducing vibration and boosting surface contact.



## BUILT TO OUTLAST

A wider tread and dense, wear-resistant rubber mean these tires go the distance—longer, stronger, tougher.



## US STANDARDS, GLOBAL TRUST

Designed with trusted U.S. standards, we deliver precision, durability, and performance that meets global demands.



## FINEST CEYLON RUBBER

Harvested from Sri Lanka's finest plantations, our natural rubber delivers lasting strength, resilience, & sustainability.



## 4000-HOUR LIFESPAN

Built for endurance, Rovince tires deliver over 4000 hours of reliable performance—cutting downtime and maximizing value.



## BUILT FOR 24/7

Low heat-build-up compounds ensure nonstop performance across shifts. We keep your machines running—day and night.



## PRIVATE LABEL READY

Private label, premium quality. We manufacture world-class tires under your brand—so you own the edge.



## PREMIUM & PRICED RIGHT

Premium quality meets competitive pricing. Rovince offers unmatched value, proudly made in Sri Lanka.





**R1 SUPER PREMIUM TIRE**



**R2 SUPER PREMIUM TIRE**

01

Specially formulated abrasion-resistant natural rubber.

02

Wider lugs for a bigger footprint and enhanced load capacity.

03

Vibration-free ride for operator comfort.



## FEATURES

04

Effective liquid siphoning tread for improved traction.

05

Deep tread for longer wear life & fewer replacements.

06

Low rolling resistance for better fuel efficiency & cost savings over every KM.

## WHERE THIS TIRE PERFORMS BEST



Container Trailers



Airport Baggage Trailers



Forklifts



Electric Tow Tractors



Container Handlers



# NON-MARKING SOLID RESILIENT TIRES



Engineered for clean, indoor environments, Rovince Non-Marking Solid Resilient Tires deliver high durability without leaving stains or scuff marks on sensitive floors.

**01**

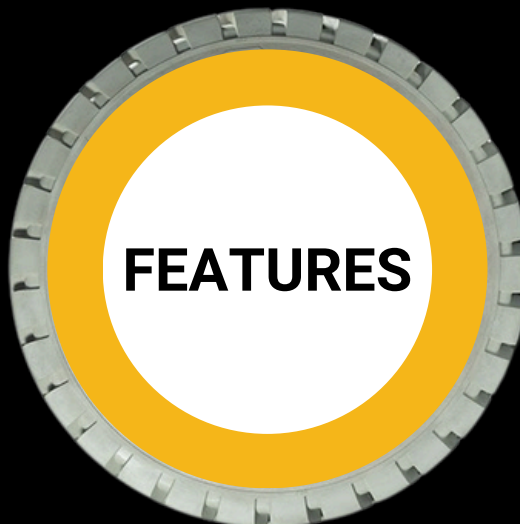
Non-marking compound for stain-free, clean-floor operation.

**02**

Solid resilient construction ensures puncture-proof performance.

**03**

Excellent load-bearing capacity for industrial use.



Ideal for indoor applications like warehouses, factories, and food-grade facilities

**04**

Smooth ride quality with reduced vibration & noise.

**05**

Low rolling resistance for better fuel efficiency & cost savings over every KM.

**06**

## WHERE THIS TIRE PERFORMS BEST



Mobile Work Platforms



Reach Trucks



Indoor Forklifts

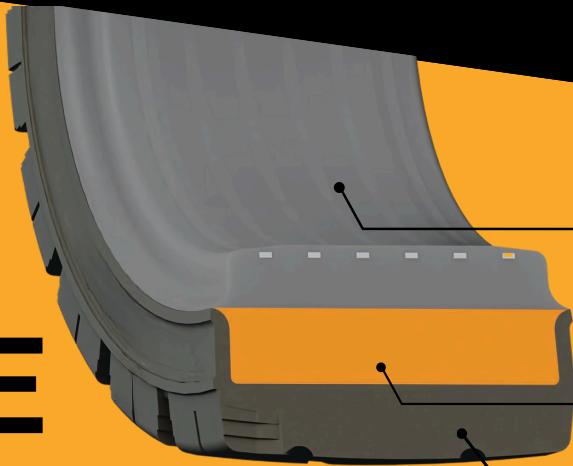


Order Pickers



Pallet Stackers

## TIRE CROSS SECTION



### Base Layer

Specially designed for high stability and strong grip by adding premium compound.

### Centre Layer

Designed to provide an excellent cushion effect and high steering process.

### Tread Layer

Specially designed to prevent wear and abrasion properties. Low heat build up.

## UNMATCHED COMPLIANCE EXCELLENCE



### REACH

Chemicals approved by the European Chemical Directive



### THE TIRE & RIM ASSOCIATION

Ensure full load capacity and safety standards



### ETRTO

Ensure full load capacity and safety standards



# TECHNICAL SPECIFICATIONS

## R1 SUPER PREMIUM TIRE

Tire Size	Rim size	Tread Design	Tire Dimensions			2 Layer Tire Weight (kg)	3 Layer Tire Weight (kg)	Per Day Capacity
			Outer Diameter (mm)	Section width (mm) (60J)	Tread width (mm)			
15 x 4 1/2 - 8	3	Traction/Lug	375	116	110	10.15	9.95	14
4.00 - 8	3.75	Traction/Lug	403	116	106	12.2	12	7
16 x 6 - 8	4.33	Traction/Lug	417	148	135	17	16.8	7
5.00 - 8	3	Traction/Lug	453	122	112	17.6	17.2	7
18 x 7 - 8	4.33	Traction/Lug	451	146	133	21.3	20.8	12
140 / 55 - 9	4	Traction/Lug	383	124	118	10.9	10.4	7
6.00 - 9	4	Traction/Lug	529	131	120	26.5	26	18
21 x 8 x 9	6	Traction/Lug	523	172	159	34.8	34.3	6
200 / 50 - 10	6.5	Traction/Lug	457	187	170	24.7	24.2	12
6.50 - 10	5	Traction/Lug	571	151	136	36.5	35.8	12
23 x 9 -10	6.5	Traction/Lug	578	184	168	45.7	45	6
7.00 - 12	5	Traction/Lug	652	166	150	46.8	45.8	12
23 x 10 - 12	8	Traction/Lug	576	217	211	50.2	49	5
27 x 10 - 12	8	Traction/Lug	668	220	205	73.2	71.9	5
28 x 9 -15	7	Traction/Lug	689	204	190	60.1	58.9	10
7.00 - 15	5.5/6	Traction/Lug	748	186	165	67	65.8	5
2.50 - 15	7.0/7.5	Traction/Lug	715	212	193	67.5	66.2	5
8.25 - 15	5.5/6.5	Traction/Lug	812	201	181	89.4	88	5
8.25 - 15 SM	6.5	Smooth				94.9	92.2	5
3.00 - 15	8	Traction/Lug	814	238	216	111.9	108.1	4
28 x 12.5 - 15	9.75	Traction/Lug	683	280	268	81.5	78.75	3.5
355 x 65 - 15	9.75	Traction/Lug	819	300	271	136.5	133.5	3.5

Tire Size	Rim size	Tread Design	Tire Dimensions			2 Layer Tire Weight (kg)	3 Layer Tire Weight (kg)	Per Day Capacity
			Outer Diameter (mm)	Section width (mm) (60J)	Tread width (mm)			
9.00 - 20	7	Traction/Lug	975	241	215	143.7	140.6	3.5
10.00 - 20 PORT TIRE	7.5	Traction/Lug				154.3		3.5
10.00 - 20	7.5/8	Traction/Lug	1010	252	230		167.6	7
10.00 - 20 SM	7.5/8	Smooth					162	3.5
12.00 - 20	8/8.5/1 0.0	Traction/Lug	1086	264	236	227	223.5	3

Note: Any of the above tire sizes can be manufactured and supplied in black or non-marking colors, with standard rim-fit or clip/lip/quick/easy-fit rim specifications.

## R2 SUPER PREMIUM TIRE

Tire Size	Rim size	Tread Design	Tire Dimensions			2 Layer Finish Tire Average Weight (kg)	3 Layer Finish Tire Average Weight (kg)	Per Day Production Capacity
			Outer Diameter (mm)	Section width (mm) (60J)	Tread width (mm)			
15 x 4 1/2 - 8	3	Traction/Lug				10.2	10	7
5.00 - 8	3	Traction/Lug				17.7	17.5	14
18 x 7 - 8	4.33	Traction/Lug	453	152	141	21	20.7	6
6.00 - 9	4	Traction/Lug	520	139	126	26.2	25.9	6
200 / 50 - 10	6.5	Traction/Lug				25.2	24.8	6
6.50 - 10	5	Traction/Lug	574	154	137	36.4	35.9	12
7.00 - 12	5	Traction/Lug	643	162	156	46	45.5	12
28 x 9 -15	7	Traction/Lug	688	210	197	60.8	60	5

Tire Size	Rim size	Tread Design	Tire Dimensions			2 Layer Finish Tire Average Weight (kg)	3 Layer Finish Tire Average Weight (kg)	Per Day Production Capacity
			Outer Diameter (mm)	Section width (mm) (60J)	Tread width (mm)			
7.00 - 15	5.5/6.0	Traction/Lug				67.8	66.2	5
2.50 - 15	7/7.5	Traction/Lug				70	68	5
8.25 - 15	5.5/6.5	Traction/Lug	810	202	180	91.5	89.5	5

Note: Any of the above tire sizes can be manufactured and supplied in black or non-marking colors, with standard rim-fit or clip/lip/quick/easy-fit rim specifications.



**At Rovince, we deliver quality tires, customer-first service,  
and a buying experience built around you!**

WWW.ROVINCETIRE.COM | RANIL@ROVINCETIRE.COM |  +94 77 782 1330







**Rovince**



# PRESS ON BAND TIRES

Built compact and durable for effortless mounting, our design delivers maximum stability & long lasting performance across all types of material handling equipment. A specialized metal-to-rubber bond ensures a non-removable fit, engineered to stay locked in through the toughest tasks.



## GRIP THAT COMMANDS

Open, deep-tread designs dig in and hold firm—no slipping, just superior traction.



## COMFORT COMPOUND

The soft inner layer adapts under pressure—reducing vibration and boosting surface contact.



## BUILT TO OUTLAST

A wider tread and dense, wear-resistant rubber mean these tires go the distance—longer, stronger, tougher.



## US STANDARDS, GLOBAL TRUST

Designed with trusted U.S. standards, we deliver precision, durability, and performance that meets global demands.



## FINEST CEYLON RUBBER

Harvested from Sri Lanka's finest plantations, our natural rubber delivers lasting strength, resilience, & sustainability.



## 4000-HOUR LIFESPAN

Built for endurance, Rovince tires deliver over 4000 hours of reliable performance—cutting downtime and maximizing value.



## BUILT FOR 24/7

Low heat-build-up compounds ensure nonstop performance across shifts. We keep your machines running—day and night.



## PRIVATE LABEL READY

Private label, premium quality. We manufacture world-class tires under your brand—so you own the edge.



## PREMIUM & PRICED RIGHT

Premium quality meets competitive pricing. Rovince offers unmatched value, proudly made in Sri Lanka.



## TRACTION TIRE



## SMOOTH TIRE

01

Easy to install with secure press-fit mounting.

02

Compact design ideal for small industrial vehicles.

03

High load capacity and excellent traction.



04

Long wear life in demanding conditions.

05

Reduced downtime and maintenance.

06

Low rolling resistance for better fuel efficiency & cost savings over every KM.

## WHERE THIS TIRE PERFORMS BEST



Compact Loader



Side Loader



Forklifts



Terminal Trailers



# NON-MARKING PRESS ON BAND TIRES



Crafted with a non-marking compound, Rovince Non-Marking Press-On Bands offer the same rugged durability with a clean, floor-safe performance for hygiene-sensitive environments.

01

Non-marking formula prevents floor stains and scuffing.

02

Quiet and smooth operation on indoor surfaces.

03

Maintains strength and stability under heavy loads.

## FEATURES

Ideal for pharma, food, & cleanroom environments.

04

Resistant to chunking and abrasion.

05

Low rolling resistance for better fuel efficiency & cost savings over every KM.

06

## WHERE THIS TIRE PERFORMS BEST



Pallet Jacks



Counterbalance  
Forklifts

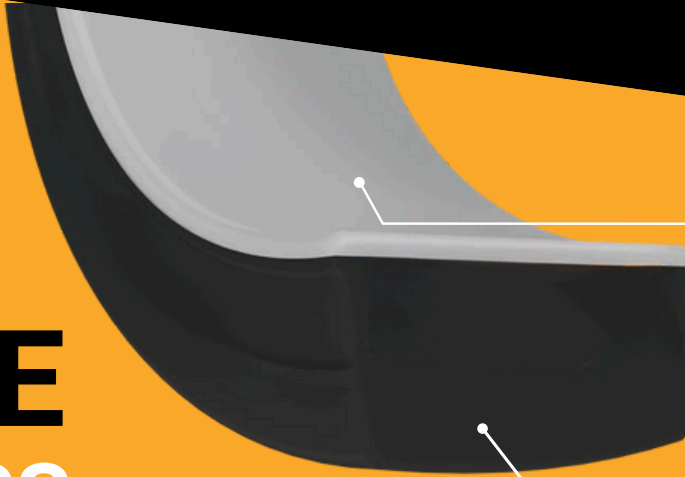


Conveyor Drive Unit



Custom Indoor  
Equipment

## TIRE CROSS SECTION



### Base Layer

The steel band provides structural support and a secure press-on fit, while the bonding layer ensures durable adhesion between the metal and rubber under operational stress.

### Tread Layer

Provides traction, durability, and wear resistance. Absorbs shocks, vibrations, and provides ride comfort. Helps in evenly distributing the load.

## UNMATCHED COMPLIANCE EXCELLENCE



### REACH

Chemicals approved by the  
European Chemical Directive



### THE TIRE & RIM ASSOCIATION

Ensure full load capacity  
and safety standards



### ETRTO

Ensure full load capacity  
and safety standards



# TECHNICAL SPECIFICATIONS

Tyre size	Available Tread Pattern	Approx. Average Finish Tyre Weight (Black)-kgs	Actual Tyre Dimensions (mm)			Tire Load Capacity (Kg)		
			Overall Diameter. (mm)	Section Width. (mm)	Wearable Lug Height. (mm)	Static	Forklift Trucks Up to 25 Km/h	
							Load Wheel	Steering Wheel
9 x 5 x 5 (229/127-127)	SMOOTH	6.7	230	127	40	1500	550	450
10 x 4 x 6 1/2 (254/102-165)	SMOOTH	5.8	252	102	30	1530	565	465
10 x 5 x 6 1/2 (254/127-165)	SMOOTH	7.4	252	127	70	1530	735	605
12 x 4 1/2 x 8 (305/114-203)	SMOOTH	8.8	304	114	40	1575	755	620
13 1/2 x 5 1/2 x 8 (343/140-203)	SMOOTH / TRACTION	13.2	344	140	60	2280	1095	895
14 x 4 1/2 x 8 (356/114-203)	SMOOTH / TRACTION	11.5	354	114	65	1760	850	695
14 x 5 x 10 (356/127-254)	SMOOTH	11.5	354	127	40	2020	970	795
15 x 4 x 11 1/4 (381/102-286)	SMOOTH	10	376	102	34	1950	980	800
15 x 5 x 11 1/4 (381/127-286)	SMOOTH / TRACTION	12	376	127	34	2100	1010	830
16 1/4 x 5 x 11 1/4 (413/127-286)	SMOOTH / TRACTION	14.6	412	127	50	2300	1105	905
16 1/4 x 6 x 11 1/4 (413/152-286)	SMOOTH / TRACTION	17.6	412	152	50	2890	1395	1140
16 1/4 x 7 x 11 1/4 (413/178-286)	SMOOTH	21.0	412	178	50	3500	1680	1380
16 x 5 x 10 1/2 (406/127-267)	SMOOTH / TRACTION	15.5	410	127	60	2275	1095	895
16 x 6 x 10 1/2 (406/152-267)	SMOOTH / TRACTION	19	410	152	60	2875	1390	1140
16 x 7 x 10 1/2 (406/178-267)	SMOOTH	22.5	410	178	60	3500	1685	1380
18 x 5 x 12 1/8 (457/127-308)	SMOOTH	21.3	460	127	64	2480	1195	980
18 x 6 x 12 1/8 (457/152-308)	SMOOTH / TRACTION	22.5	460	152	64	3155	1525	1250
18 x 7 x 12 1/8 (457/178-308)	SMOOTH / TRACTION	26.4	460	178	64	3855	1855	1520
18 x 8 x 12 1/8 (457/203-308)	SMOOTH / TRACTION	30.9	460	203	64	4530	2180	1790
21 x 7 x 15 (533/178-381)	SMOOTH / TRACTION	32.5	535	178	64	4335	2085	1710
21 x 8 x 15 (533/203-381)	SMOOTH / TRACTION	36.5	535	203	64	5100	2455	2015

Tyre size	Available Tread Pattern	Approx. Average Finish Tyre Weight (Black)-kgs	Actual Tyre Dimensions (mm)			Tire Load Capacity (Kg)		
			Overall Diameter. (mm)	Section Width. (mm)	Wearable Lug Height. (mm)	Static	Forklift Trucks Up to 25 Km/h	
							Load Wheel	Steering Wheel
21 x 9 x 15 (533/229-381)	SMOOTH / TRACTION	42.5	535	229	64			
22 x 8 x 16 (559/203-406)	SMOOTH / TRACTION	39	545	203	58	5285	2545	2085
22 x 9 x 16 (559/229-406)	SMOOTH / TRACTION	42	545	229	58	6110	2930	2400
22 x 10 x 16 (559/254-406)	SMOOTH	49.5	545	254	58	6900	3315	2720
22 x 12 x 16 (559/305-406)	SMOOTH / TRACTION	85.5	545	305	58	8515	4090	3350
22 x 14 x 16 (559/356-406)	SMOOTH	69	545	356	58	10130	4865	3990
28 x 10 x 22 (711/254-559)	SMOOTH	71.5	710	254	62	8260	3970	3255
28 x 12 x 22 (711/305-559)	SMOOTH	80	710	305	62	10190	4900	4015
33 x 14 x 22(840/356-559)	SMOOTH	164.6	840	355.6	49	13740	6380	5200
33 x 16 x 22(840/406-559)	SMOOTH	188.1	840	406.4	49			
40 x 12 x 30 (1016/305-762)	SMOOTH	170.7	1016	304.8	43	13225	6030	5010
40 x 14 x 30 (1016/356-762)	SMOOTH	199.2	1016	355.6	43	16015	7300	6060
40 x 16 x 30 (1016/406-762)	SMOOTH	228	1016	406.4	43	18755	8550	7095
40 x 20 x 30 (1016/508-762)	SMOOTH	284.5	1016	508	43	24340	11090	9210

Note: Any of the above tire sizes can be manufactured and supplied in black or non-marking colors, with standard rim-fit or clip/lip/quick/easy-fit rim specifications.



**At Rovince, we deliver quality tires, customer-first service, and a buying experience built around you!**

WWW.ROVINCETIRE.COM | RANIL@ROVINCETIRE.COM | 📞 +94 77 782 1330



**Rovince**



# SKID STEER TIRES

Built tough for the roughest terrains, Rovince Workmaster SKS tires deliver superior traction, stability, and durability for heavy-duty skid steer operations.



## GRIP THAT COMMANDS

Open, deep-tread designs dig in and hold firm—no slipping, just superior traction.



## SMART SIDEWALL

Need a softer ride? Go with Aperture Sidewalls. Want cleaner operations? Closed Sidewalls make maintenance a breeze.



## BUILT TO OUTLAST

A wider tread and dense, wear-resistant rubber mean these tires go the distance—longer, stronger, tougher.



## US STANDARDS, GLOBAL TRUST

Designed with trusted U.S. standards, we deliver precision, durability, and performance that meets global demands.



## FINEST CEYLON RUBBER

Harvested from Sri Lanka's finest plantations, our natural rubber delivers lasting strength, resilience, & sustainability.



## 4000-HOUR LIFESPAN

Built for endurance, Rovince tires deliver over 4000 hours of reliable performance—cutting downtime and maximizing value.



## BUILT FOR 24/7

Low heat-build-up compounds ensure nonstop performance across shifts. We keep your machines running—day and night.



## PRIVATE LABEL READY

Private label, premium quality. We manufacture world-class tires under your brand—so you own the edge.



## PREMIUM & PRICED RIGHT

Premium quality meets competitive pricing. Rovince offers unmatched value, proudly made in Sri Lanka.



**TRACTION TIRE**



**SMOOTH TIRE**

01

Aggressive tread pattern for enhanced traction on mud, gravel, and debris.

02

Reinforced sidewalls for puncture and impact resistance.

03

Designed for longer wear life, reduced downtime & self-cleaning capabilities.



High load capacity ideal for construction, landscaping, and demolition sites.

04

Optimized footprint for better balance and reduced machine stress.

05

Low rolling resistance for better fuel efficiency & cost savings over every KM.

06

## WHERE THIS TIRE PERFORMS BEST



Skid Steer Loader



Compact Utility Loader



Mini Excavator



Trencher



Snow Removal Equipment

## UNMATCHED COMPLIANCE EXCELLENCE



### REACH

Chemicals approved by the European Chemical Directive



### THE TIRE & RIM ASSOCIATION

Ensure full load capacity and safety standards



### ETRTO

Ensure full load capacity and safety standards



# TECHNICAL SPECIFICATIONS

Tyre size	Rim Width	Approx. Average Finished Tyre Weight (Black STD)- kgs	Approx. Average Comple e Wheel Weight - kgs	Actual Tire Dimensions (mm)			Tire Load Capacity (Kg)					
				Overall Diameter	Section Width	Tread Depth	Static	Counterbalanced lift Trucks Up to 25 Km/h		Other Vehicles		
								Load Wheel	Steering Wheel	6 Km/h	10 Km/h	25 Km/h
30X10-16 Traction With Aperture	6.00	71	94.2	745	235	40	4605	3965	3050	3965	3600	3050
31X10-20 Traction With Aperture	7.50	66	113	780	240	38	4605	3965	3050	3965	3600	3050
33X12-20 Traction With Aperture	7.50 & 8.00	97.6	145.6	830	286	38	6040	5200	4000	5200	4720	4000
33X12-20 Smooth Without Aperture	7.50 & 8.00	104	157	833	290	N/A	6040	5200	4000	5200	4720	4000

Note: Any of the above tire sizes can be manufactured and supplied in black or non-marking colors, with standard rim-fit or clip/lip/quick/easy-fit rim specifications.



**At Rovince, we deliver quality tires, customer-first service,  
and a buying experience built around you!**

WWW.ROVINCETIRE.COM | RANIL@ROVINCETIRE.COM | +94 77 782 1330





**Rovince**



# PORT TIRES

Rovince Port Tires are engineered for extreme loads and continuous duty cycles, offering unmatched strength, stability, and safety in high-demand port and terminal environments.



## GRIP THAT COMMANDS

Open, deep-tread designs dig in and hold firm—no slipping, just superior traction.



## COMFORT COMPOUND

The soft inner layer adapts under pressure—reducing vibration and boosting surface contact.



## BUILT TO OUTLAST

A wider tread and dense, wear-resistant rubber mean these tires go the distance—longer, stronger, tougher.



## US STANDARDS, GLOBAL TRUST

Designed with trusted U.S. standards, we deliver precision, durability, and performance that meets global demands.



## FINEST CEYLON RUBBER

Harvested from Sri Lanka's finest plantations, our natural rubber delivers lasting strength, resilience, & sustainability.



## 4000-HOUR LIFESPAN

Built for endurance, Rovince tires deliver over 4000 hours of reliable performance—cutting downtime and maximizing value.



## BUILT FOR 24/7

Low heat-build-up compounds ensure nonstop performance across shifts. We keep your machines running—day and night.



## PRIVATE LABEL READY

Private label, premium quality. We manufacture world-class tires under your brand—so you own the edge.



## PREMIUM & PRICED RIGHT

Premium quality meets competitive pricing. Rovince offers unmatched value, proudly made in Sri Lanka.



## TRACTION TIRE



## SMOOTH TIRE

01

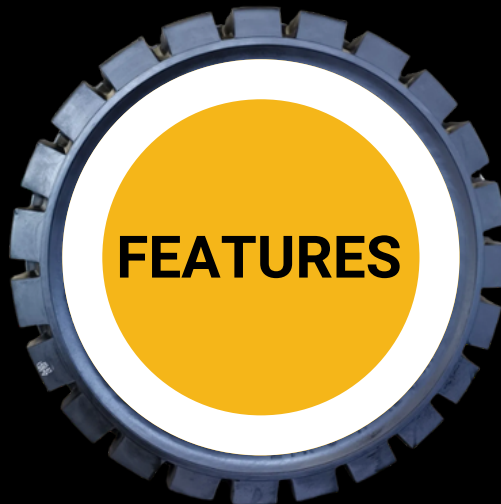
High-load capacity tailored for container handlers, reach stackers, and terminal tractors.

02

Robust casing design for resistance against wear, cuts, and impacts.

03

Superior heat dissipation for continuous, heavy-duty use.



## FEATURES

04

Deep tread and special compound for extended life.

05

Reliable performance under stop-start port operations and tight turns

06

Low rolling resistance for better fuel efficiency & cost savings over every KM.

## WHERE THIS TIRE PERFORMS BEST



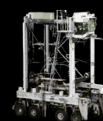
Container Trailers



Empty Container Handler



Terminal tractor



Straddle Carrier



Gantry Crane

## UNMATCHED COMPLIANCE EXCELLENCE



REACH

Chemicals approved by the European Chemical Directive



THE TIRE & RIM ASSOCIATION

Ensure full load capacity and safety standards

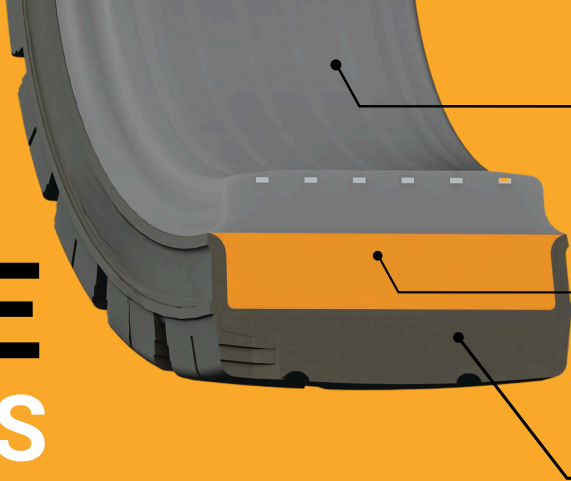


ETRTO

Ensure full load capacity and safety standards



# TIRE CROSS SECTION



## Base Layer

Specially designed for high stability and strong grip by adding premium compound.

## Centre Layer

Designed to provide an excellent cushion effect and high steering process.

## Tread Layer

Specially designed to prevent wear and abrasion properties. Low heat build up.

## TECHNICAL SPECIFICATIONS

Tire Size	Rim size	Tread Design	Tire Dimensions			2 Layer Finish Tire Average Weight (kg)	3 Layer Finish Tire Average Weight (kg)	Per Day Production Capacity
			Outer Diameter (mm)	Section width (mm) (60J)	Tread width (mm)			
8.25 - 15 SM	6.5	Smooth				94.9	92.2	5
10.00 - 20 PORT TIRE	7.5	Traction/Lug	1000	258	235	154.3	153.5	3.5
10.00 - 20 SM	7.5/8	Smooth	1005	254	232	165	162	3.5

Note: Any of the above tire sizes can be manufactured and supplied in black or non-marking colors, with standard rim-fit or clip/lip/quick/easy-fit rim specifications.

**Rovince**

**At Rovince, we deliver quality tires, customer-first service,  
and a buying experience built around you!**

WWW.ROVINCETIRE.COM | RANIL@ROVINCETIRE.COM | ☎️ +94 77 782 1330





# ROVINCE INDUSTRIAL TIRES **is a member of** ROVINCE INTERNATIONAL CORP - USA



INTERNATIONAL CORP.

## GLOBAL HEADQUARTERS

**172 E Manville St, Compton, CA 90220, USA**

## CORPORATE OFFICE

**Level 17, Parkland, 33 Park Street, Colombo 2, Sri Lanka**

## MANUFACTURING FACILITY

**P.O. Box 61192, Dunkannawa, Nattandiya, Sri Lanka**

WWW.ROVINCETIRE.COM | RANIL@ROVINCETIRE.COM |   +94 77 782 1330

## OUR GROUP OF COMPANIES



